

## Rudiments MT WEEK 3

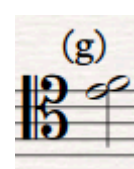
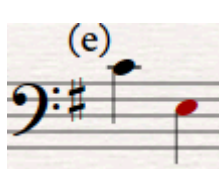
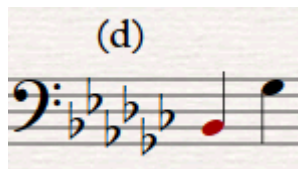
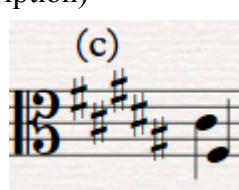
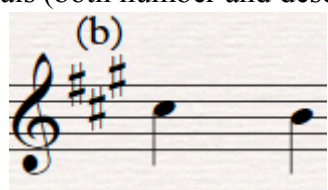
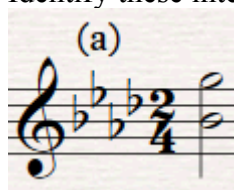
### Question 1

Name these notes:

- a perfect fifth above C
- a major seventh above E
- a major second above B flat
- a major sixth below F sharp
- a perfect unison above C flat
- a major tenth above A flat
- a major sixteenth above B

### Question 2

Identify these intervals (both number and description)



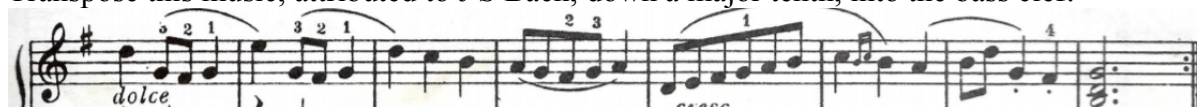
### Question 3

Transpose these key signatures:

- D major up a major sixth (bass clef)
- F major down a major third (choral tenor clef)
- C sharp major up a perfect fourth (treble clef)
- E flat major up a major sixth (alto clef)
- G flat major down a perfect fifth (tenor clef)

### Question 4

Transpose this music, attributed to J S Bach, down a major tenth, into the bass clef:



### Question 5

Write the following clefs and key signatures. In each case draw one melodic interval (beamed quavers) and one harmonic interval (minims), using only notes from the given key. Do not use any notes on, or beyond ledger lines:

- C1, E major, major sixths
- C4, D major, minor thirds
- G2, A major, major sevenths
- F4, E major, major seconds